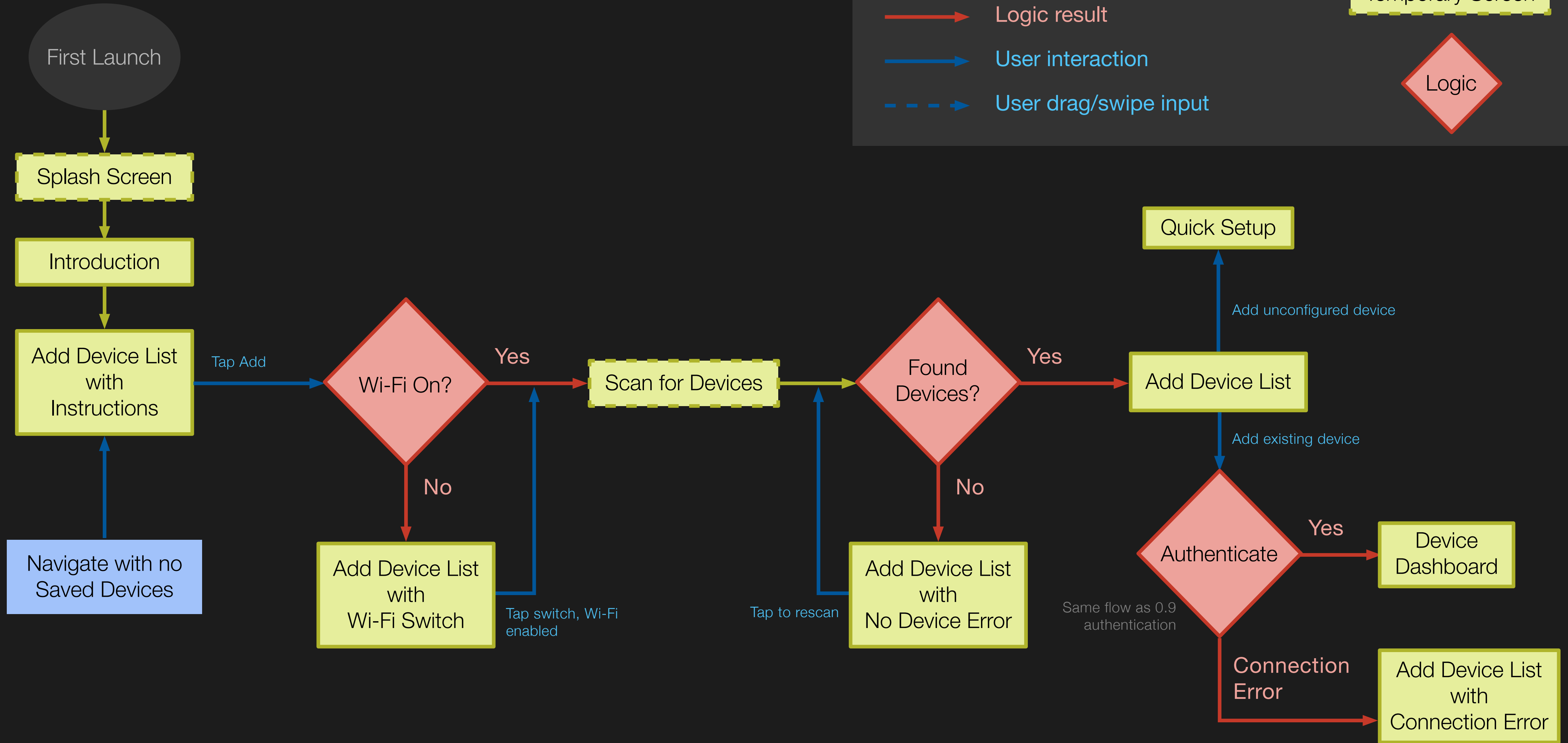
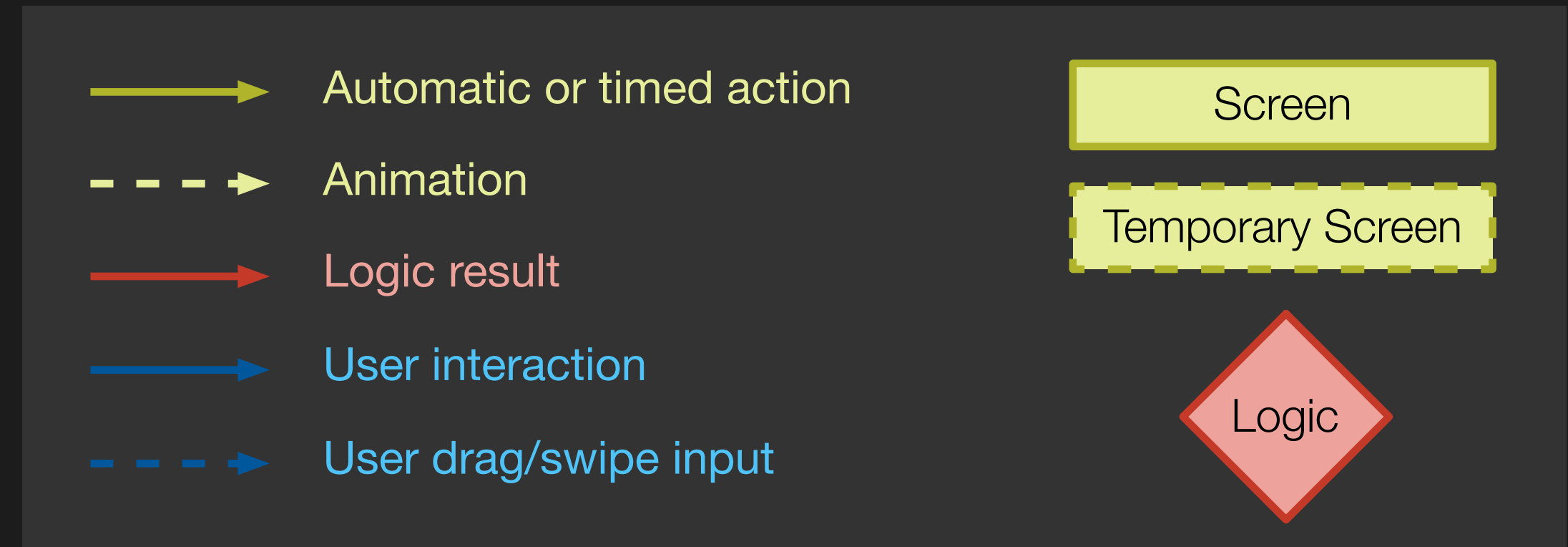


Add Devices Overview



Unconfigured Launch

The app has been launched with no devices saved. Thus, it displays the welcome message, welcome graphics, and proceeds to the device screen.

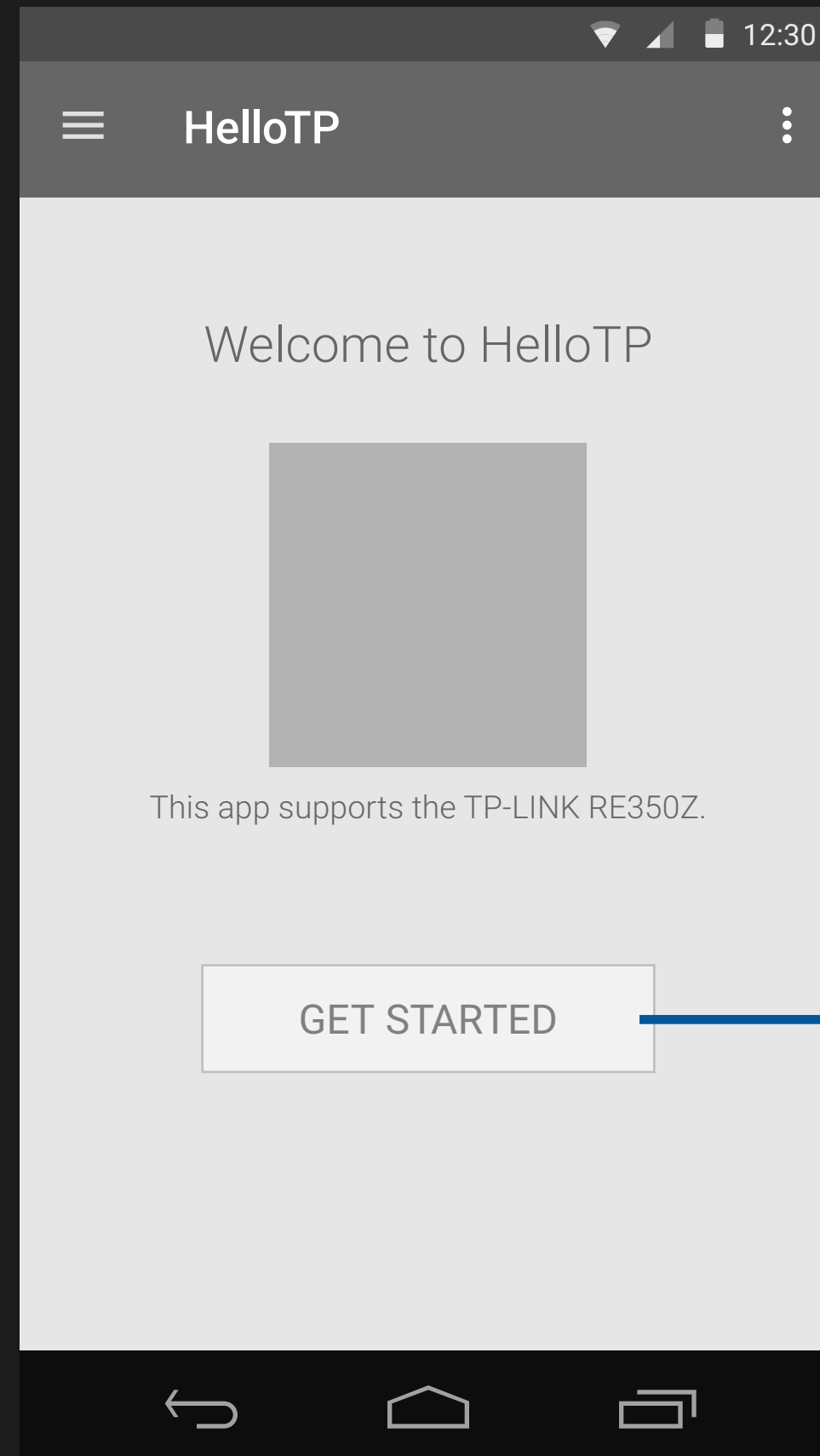
Splash screen, TBD



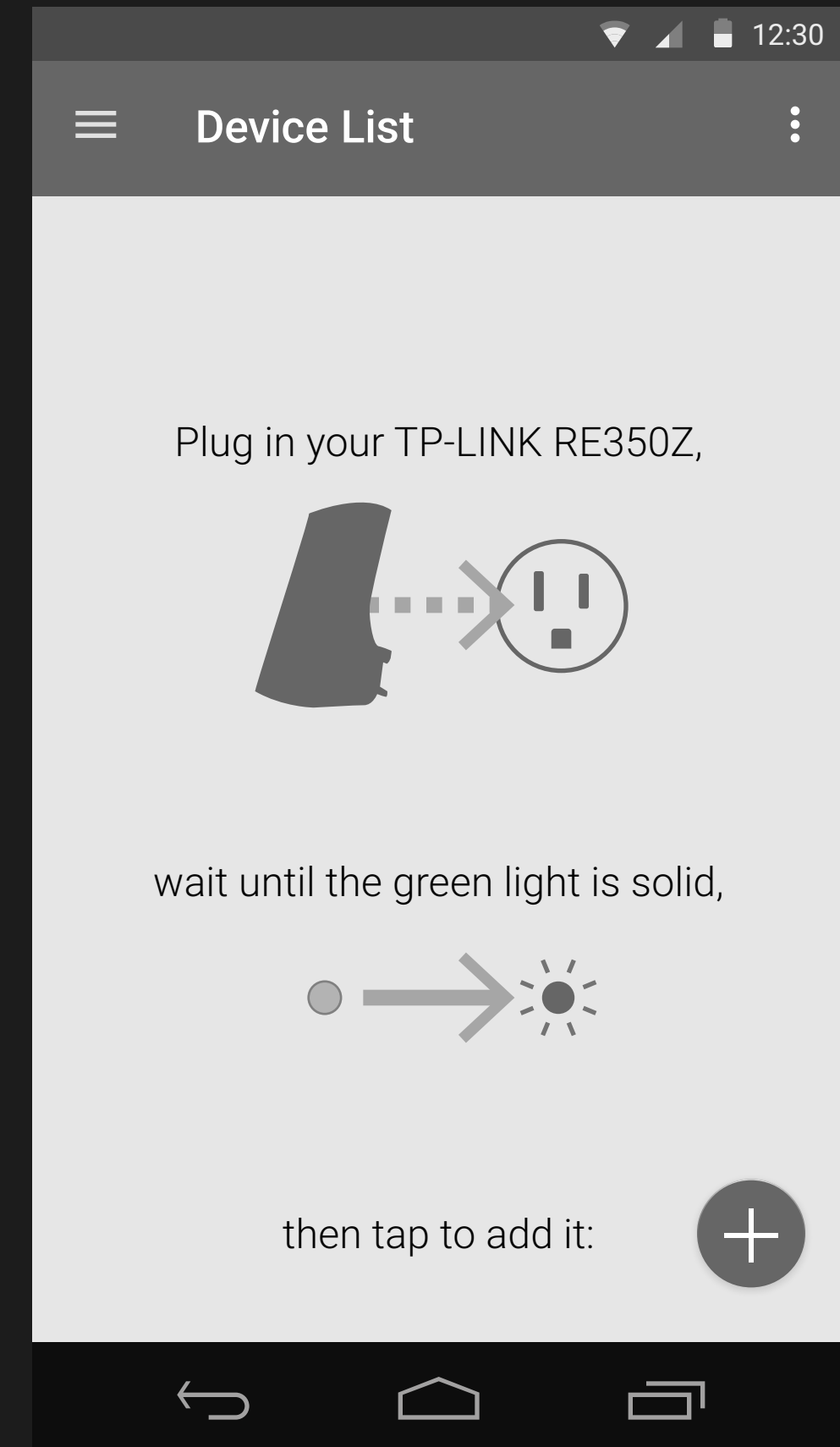
Welcome graphics,
animation

At animation end
or loading complete

Introduction, TBD
Is this necessary for one line of text?

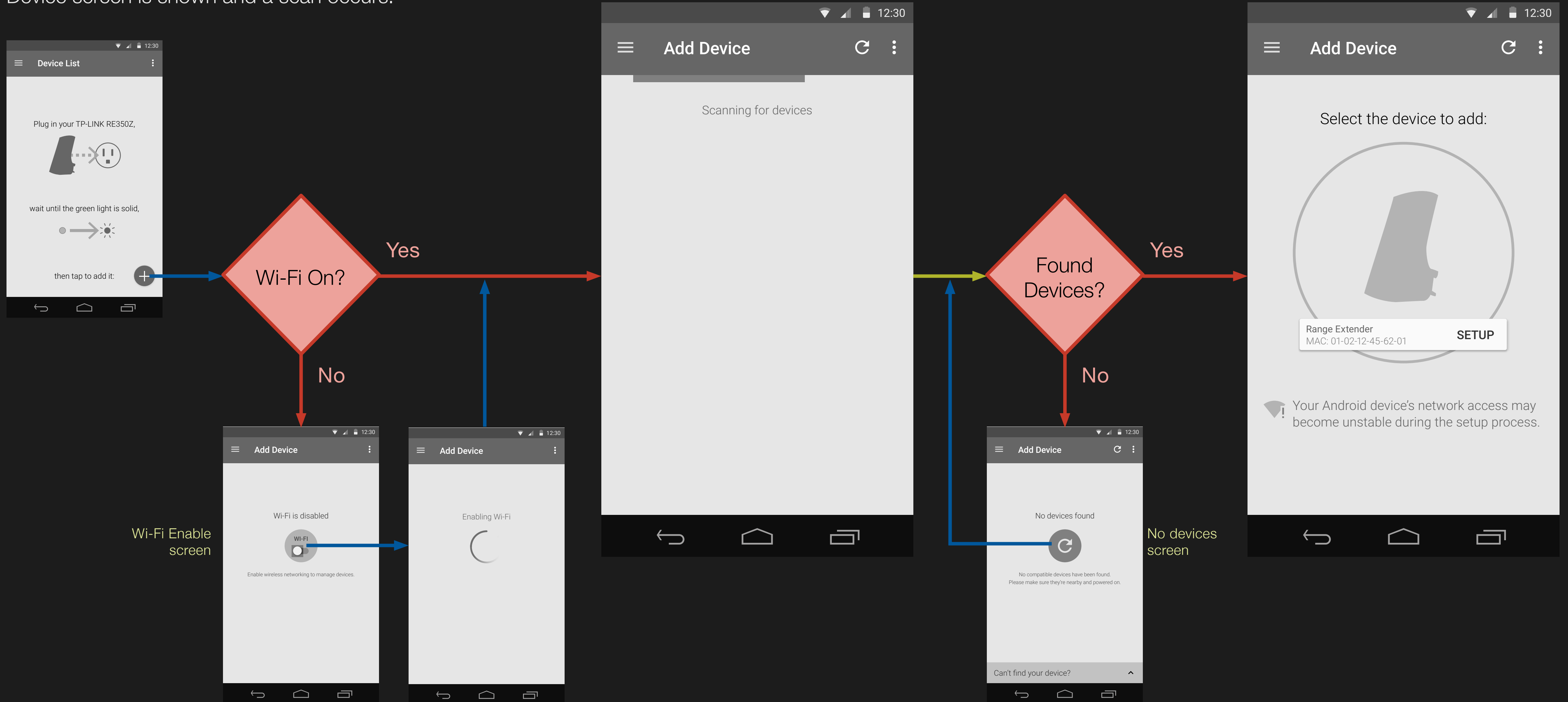


Device List with Quick Install Guide, TBD



Add Device

Once the “+” add device button is pressed the Add Device screen is shown and a scan occurs.



New Device List

The results of the phone's scan is displayed with separate areas for recognized unconfigured devices and other detected devices.

One unconfigured device

Re-scanning (also pull to refresh)

Unconfigured and existing

Only existing devices

Activity bar

Horizontal carousel shows unconfigured devices

Vertically scroll or tap to show existing devices

Quick Setup

The warning moves up slightly to accommodate the existing device preview

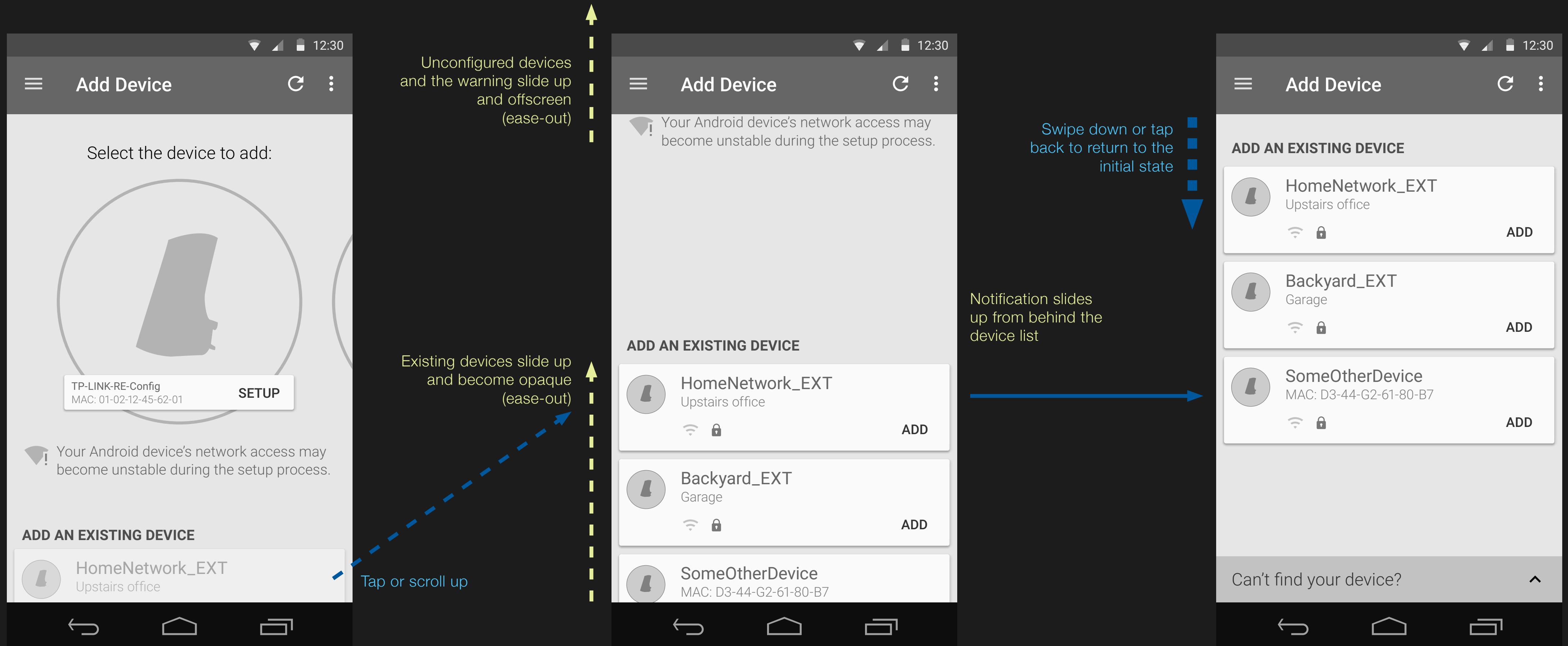
Slightly transparent existing device

Can't find your device?

The screenshots show the 'Add Device' app interface. The first screenshot shows a single unconfigured device, 'Range Extender', with a 'SETUP' button. The second screenshot shows the app after re-scanning, with a 'Quick Setup' button highlighted. The third screenshot shows both unconfigured and existing devices, with a horizontal carousel for unconfigured devices and a list for existing devices. The fourth screenshot shows only existing devices, with a 'Can't find your device?' link at the bottom.

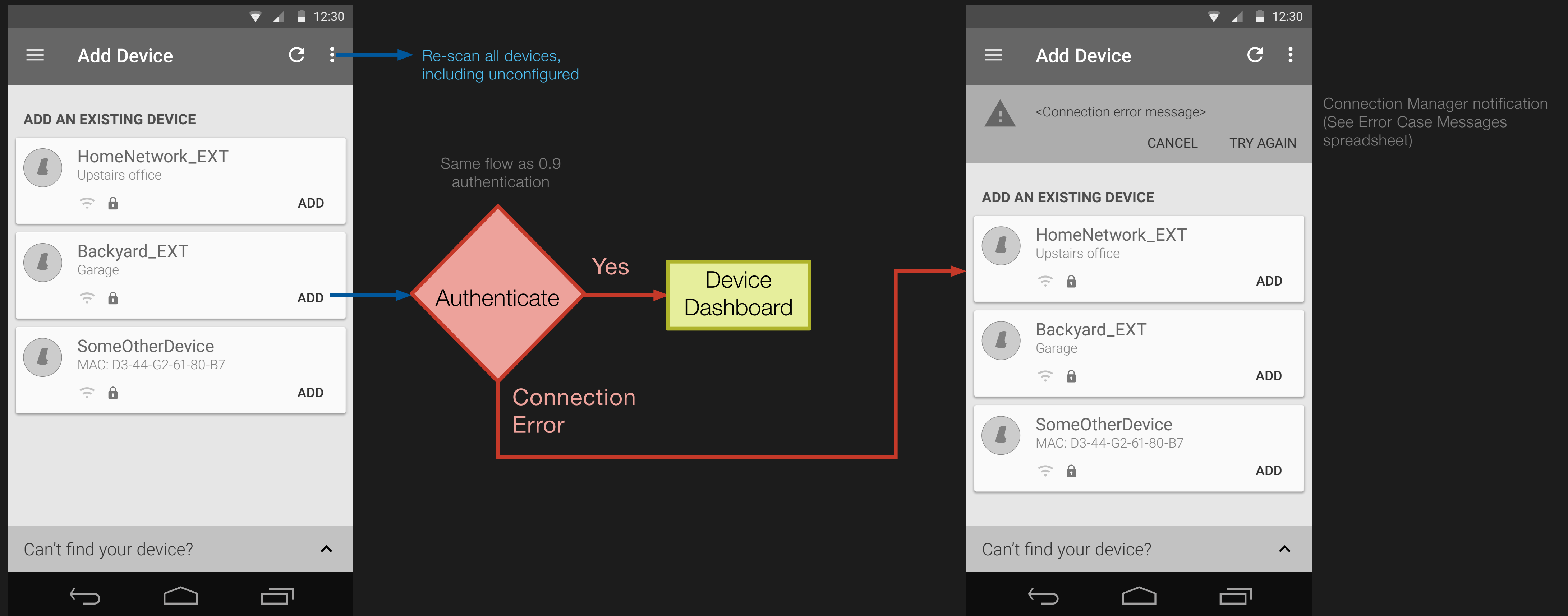
Unconfigured to existing devices transition

When combined with unconfigured devices, existing devices are initially transparent and always placed to cut off half of the top row to indicate scrollability.



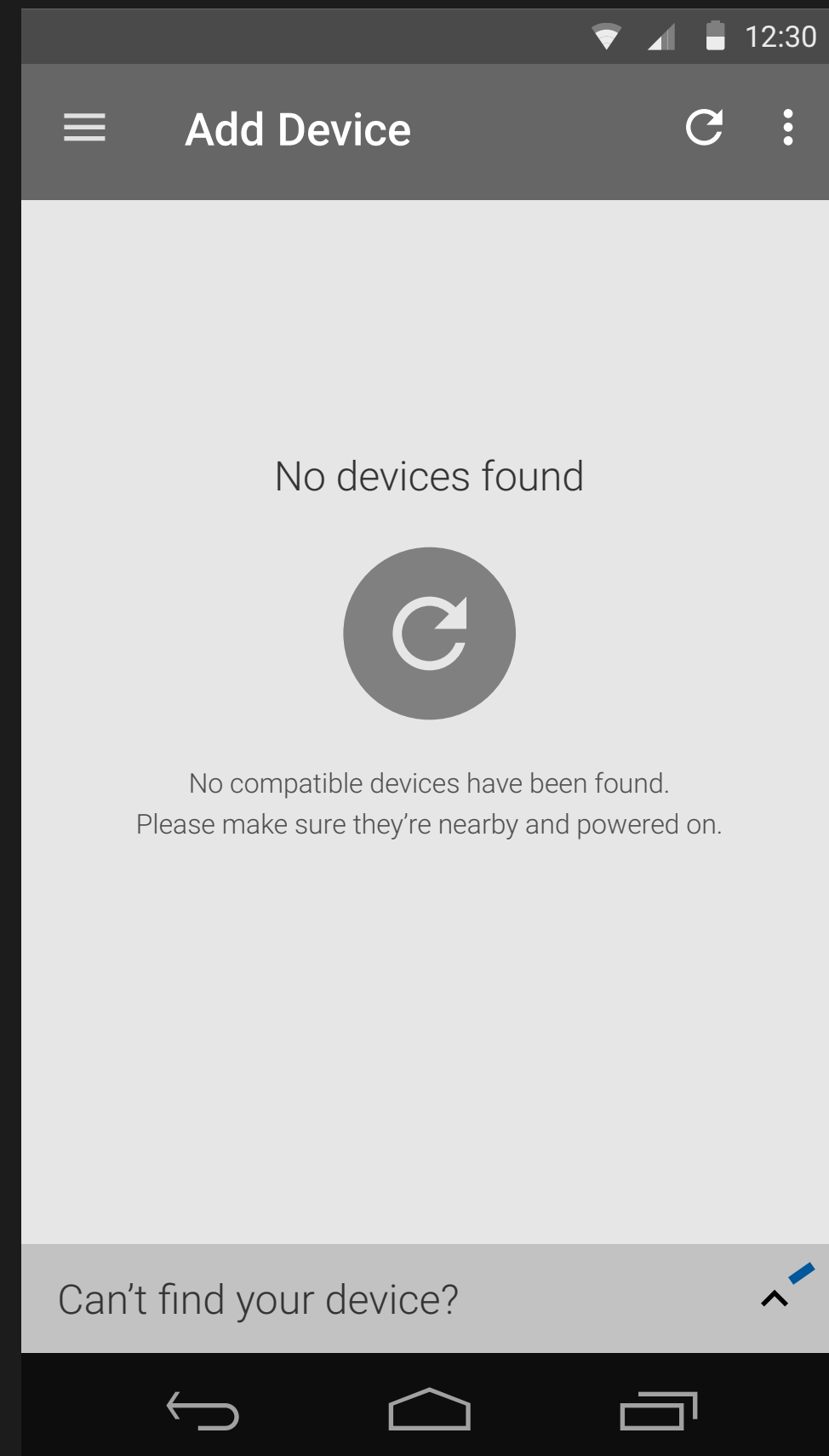
Add an Existing Device

Adding an existing device will first attempt authorization; when successful the device's dashboard will be shown.



Inline Help

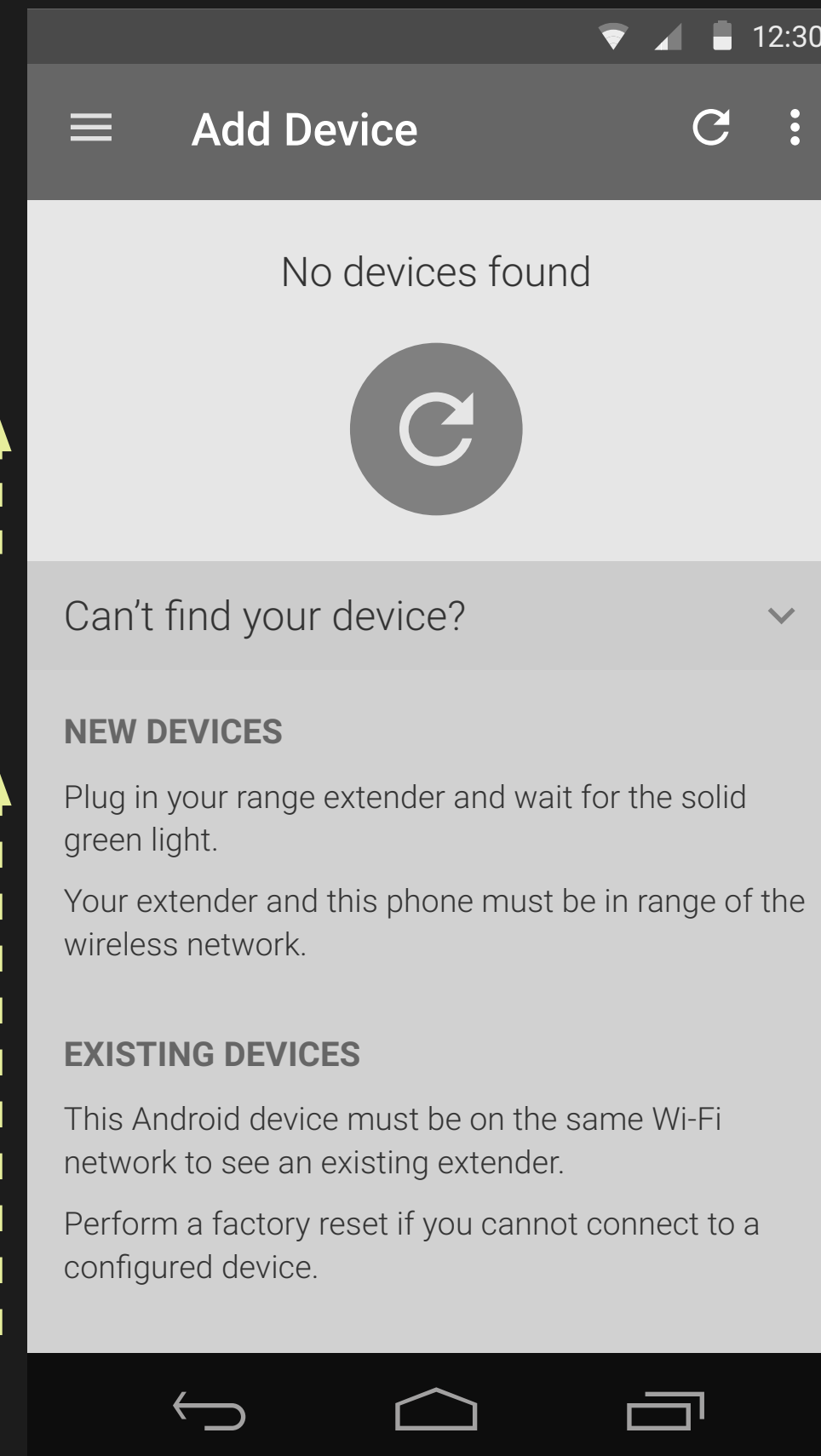
Some screens include an expanding help section.



The page's contents slide up to a fixed upper margin (24dp?)

Help slides up (ease-out)

Tap



Tap header to hide help